



<b>Yard</b>	Pershing
<b>Model</b>	76
<b>Category</b>	Open HT
<b>Visible to</b>	Italy
<b>Region</b>	Ligurian
<b>Price</b>	Private negotiation
<b>VAT</b>	Paid

### Description

Pershing 76 is one of the most desired Open, characterized by a beautiful and inimitable design, an open yacht with exciting performance, but with exceptional comfort. Great attention to detail and combinations, by the enthusiast owner, important refitting carried out in 2018/2020, yacht in great condition. Further info and work list on request.



**Main data**

Length	23.50 mt
Beam	5.50 mt
Draft	1.50 mt
Built Year	2004
Max speed	45 kn
Cruising speed	36 kn
Displacement	42000 kg
Flag	Italiana

**Material of construction**

Hull	GRP-Composite
Deck	GRP-Composite
Deck house	GRP-Composite

**Hidraulic systems**

N. tanks	1
Capacity	1300 l
Boiler	Si
Autoclave	Si
Desalter	Si

**Electrical systems**

Voltage	12-24-220 V
Chargers	Si
N. batteries	10
Capacity	2000 Ah
Generator 220V	Si
Power	Kohler 2x20 kW
Inverter	Si

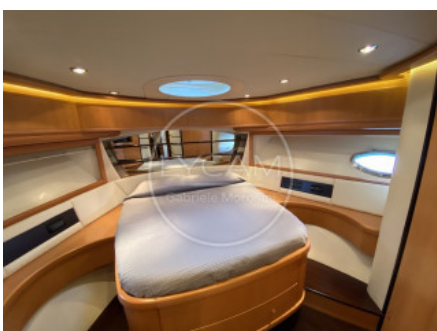
## Fuels & Engines

N. engines	2
Power HP	2000 HP
Fuel	Diesel
Brand	MTU
Model	12V2000M90 Common Rail
Consumption	300 l/hr
Transmission	Surface propellers Arneson
Engines hours	1400
N. tanks	2
Capacity	5700 l
Material	Stainless steel

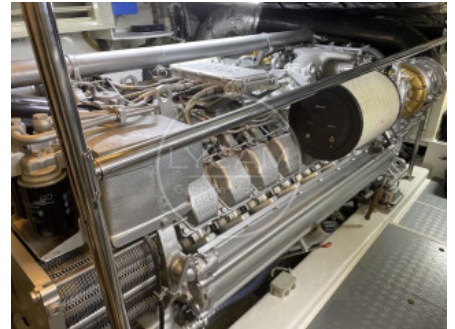
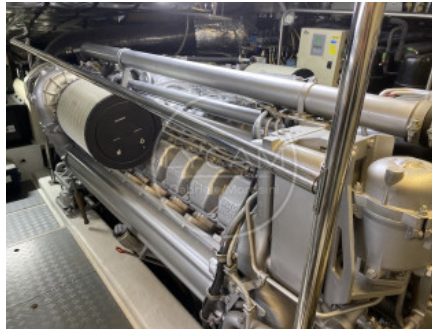
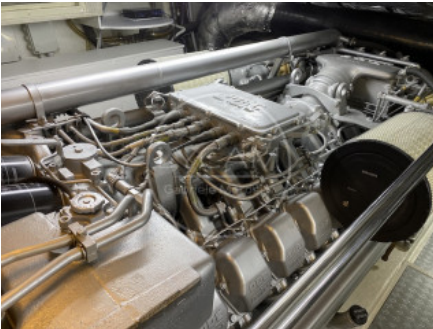
## Details

Disposition of interiors	<p>The Pershing 76 is spacious and sporty Open with 4 comfortable suites for 8 guests and a separate crew area.</p> <p>Well-kept interiors, fine leathers and essences, a large dinette with comfortable sofas, a table for 8 people in the dinette and a well-equipped kitchen with fridge, oven, dishwasher. The night area offers accommodation for up to 8 guests in 4 suites. The master stateroom is amidships and has a private bathroom and shower. The VIP double cabin is forward and has a private bathroom with shower; the third and fourth cabins have single beds and a bathroom with separate shower.</p> <p>Large spaces also outdoors, sundecks at the bow and stern with large and comfortable cushions for maximum comfort and relaxation; large cockpit with dining table for outdoor dining. Great attention to detail and combinations. Finally, a comfortable swim platform for easy access to the sea.</p>
Instruments	Engines control instrumentation - Complete Raymarine electronics (Depth Sounder / Log - Radar - Plotter / Gps - Autopilot) - VHF Shipmate - Digital anchor chain meter counter - Compass - Camera with LCD screen in cockpit and engine room - Retractable TV in the main salon and in all the cabins - Navisystem Sat Antenna - DVD - Radio / CD
Equipment	Hot / cold air conditioning - Bow thruster - Electric anchor winch - Stern mooring winch - Watermaker - Kohler 2x20kw generators - Air compressor - Boiler - Battery charger - Inverter - Besenzoni Hydraulic Gangway - Davit for Tender and Jet Ski - Hydraulic swim ladder - 2 Eurovinil rafts - Fire extinguishers and safety equipment within 50 nm - Various mooring lines and fenders - Electric stern awning - Column fridge / freezer in the kitchen - Fridge in the main saloon - Ice maker - 4 burner ceramic hob - Microwave oven - Electric hob grill - Oven in the kitchen - Dishwasher - Washer-dryer - Complete sundeck cushions - Sponge cushion covers - Jet tender, Jetski, 2 seabob and 1 Jobe Rumble.

GALLERY







Contact us: LYCAM srl - Gabriele Morosini - Professional Broker  
Mobile: +39 348 28 09 797 - Email: gm@lycam.com - Skype: gabrielemorosini.it - Web: www.lycam.com

*Disclaimer: the Company offers the details of this vessel in good faith but cannot guarantee or warrant the accuracy of this, information not warrant the condition of the vessel.  
This vessel is offered subject to prior sale, price change, or withdrawal without notice.*